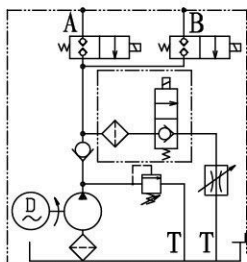
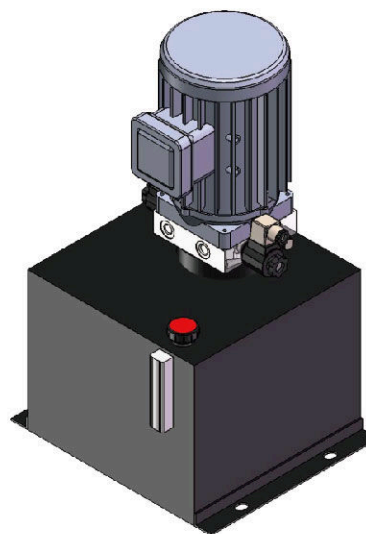
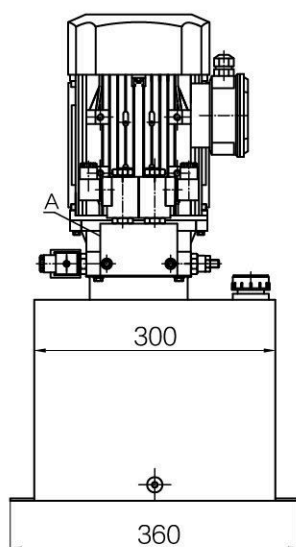
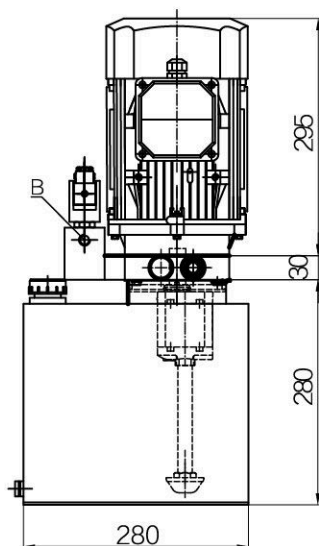


Power Unit for Scissors Lift



This power unit use no-leak dual way check valve to realize the complete isolation of two lines. It makes this two lines totally independent in the action of lift and fall. It is the ideal hydraulic power for multiple cylinder single lift system. This power unit widely used in primary and big scissors lift.



Specifications

Model	Motor	Disp. (cc/r)	Tank Cap. (L)	Pressure (MPa)	Installation	Port Size
AC-F29-2.1/F-2.2/220/2850/**-20V-C	220V 2.2Kw 2850RPM 50Hz	2.1	20	20	Vertical	G1/4
AC-F29-2.1/H-3.0/220/2850/**-20V-C	220V 3.0Kw 2850RPM 50Hz			26		
AC-F29-2.1/G-2.2/380/2850/**-20V-C	380V 2.2Kw 2850RPM 50Hz			22		
AC-F29-2.1/H-3.0/380/2850/**-20V-C	380V 3.0Kw 2850RPM 50Hz			28		

Specific parameters can be customized according to customer requirements.